

INTRODUCING: THE CLIP SYSTEM™

QUALITY STONE VENEER'S PATENTED EVOLUTION OF MECHANICALLY FASTENED STONE VENEER WITH BUILT-IN DRAINAGE.

NEW: SEGOVIA

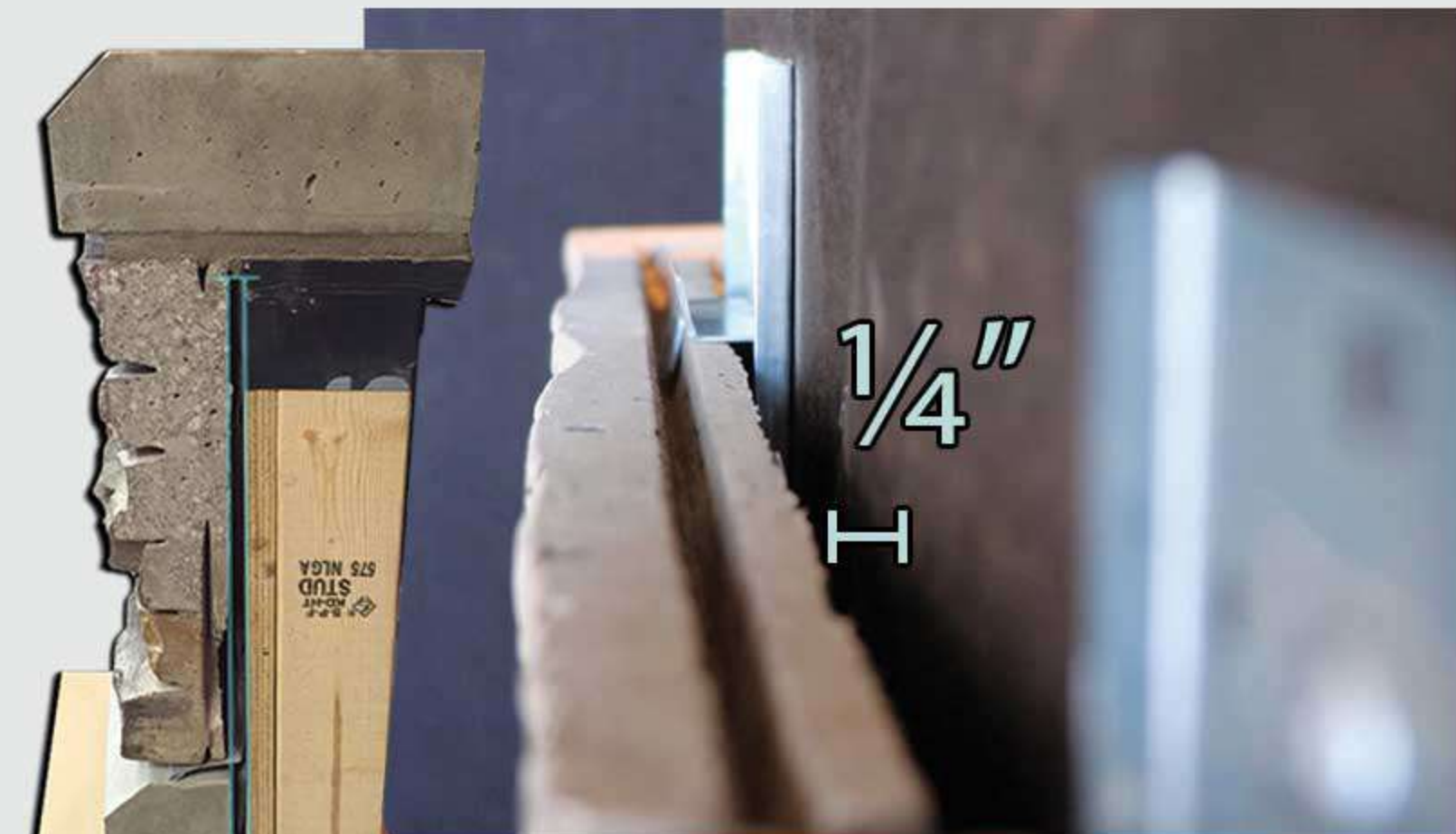
what is The Clip System™ ?

The Clip System is a patented application method and corresponding line of industry leading masonry products by Quality Stone Veneer. Through the use of a Clip and Screw attachment, the necessity for a traditional mortar and wire lath installation is eliminated, instead mechanically fastening the product to the wall.

Designed with moisture management in mind, the Clip System provides a built-in drainage plane between the stone and the structure. With new changes to the *International Building Code (IBC) and International Residential Code (IRC)* stating nationwide requirements for drainage behind stone veneer installations, the Clip System's 1/4" open and free drainage plane ensures the new code requirements are not only met, but exceeded.

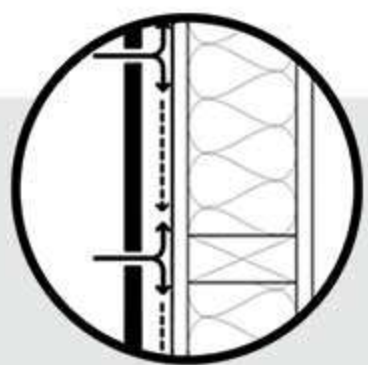


- ✓ Built-in Drainage
- ✓ Fewer Weather Limitations
- ✓ Controlled Pattern
- ✓ Reduction on Materials
- ✓ Less Weight
- ✓ Exceeds New IBC/IRC Requirements



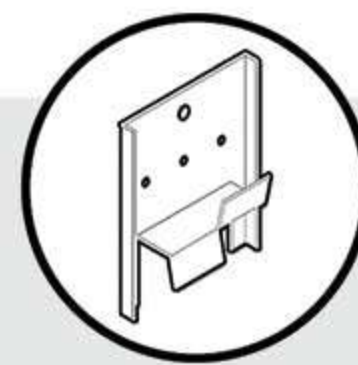
A 1/4" air space between the wall and the stone provides a built-in drainage for moisture management.

DRAINAGE PLANE



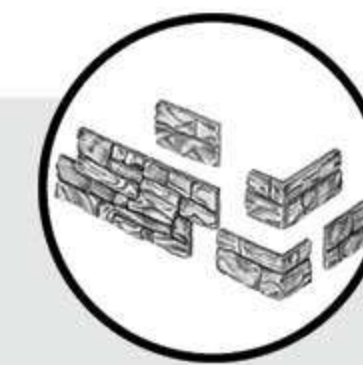
A galvanized Clip and Screw mechanically fastens the product to the wall, eliminating the necessity of a traditional mortar and wire lath installation.

CLIP & SCREW



Lambris™ Stone, Brick, and Block styles seamlessly join together, eliminating guesswork in laying.

PRESET STONE VENEER TECHNOLOGY



Watch Video
**An Introduction
to The Clip System**



50 Refton Road
Refton, PA 17568
PO Box 117

Phone : (800) 795-3229
Web : www.qualitystoneveneer.com/clip-system
Email : info@qualitystoneveneer.com

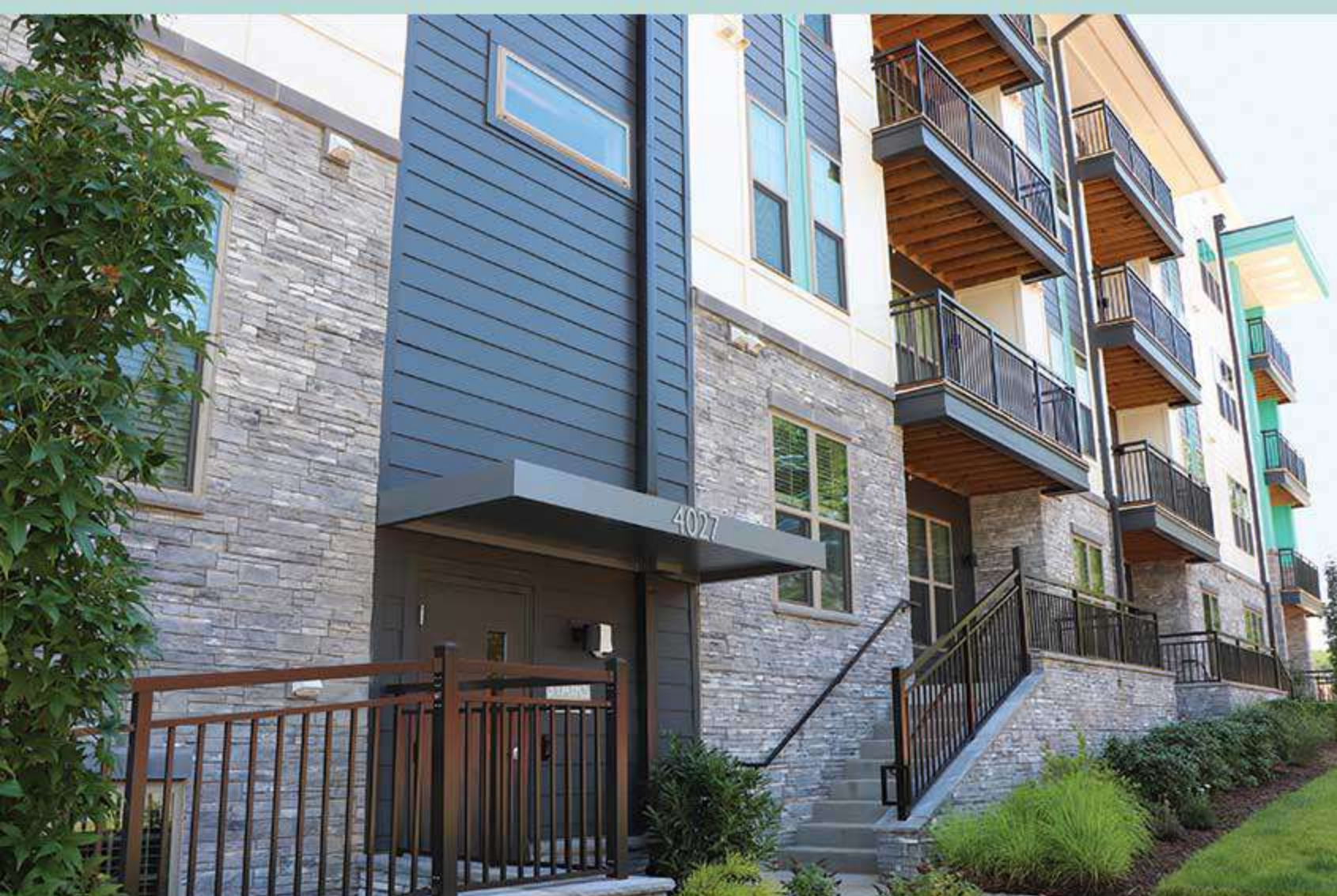


2021 Drainage Plane Code Requirements



What new requirements are presented in the International Building and International Residential Codes ?

What does Quality Stone Veneer offer to meet and exceed these requirements ?



International Building Code Changes

As of 2021, the codes for commercial and residential building set forth by the International Code Council (ICC), now equally specify the following for all stone veneer installations falling within *Moist (A)* and *Marine (C)* climates of the US:

"a space or drainage material not less than 3/16 inch in depth shall be added to the exterior side of the water resistive barrier."

Who is the ICC? What defines Code?

The ICC is an association dedicated to developing model codes and standards used in the design, build and compliance process to construct safe, sustainable, affordable and resilient structures in the built environment. Code refers directly to the minimum standard required. Code adoption comes ICC recommended across all climate zones as best building practice.

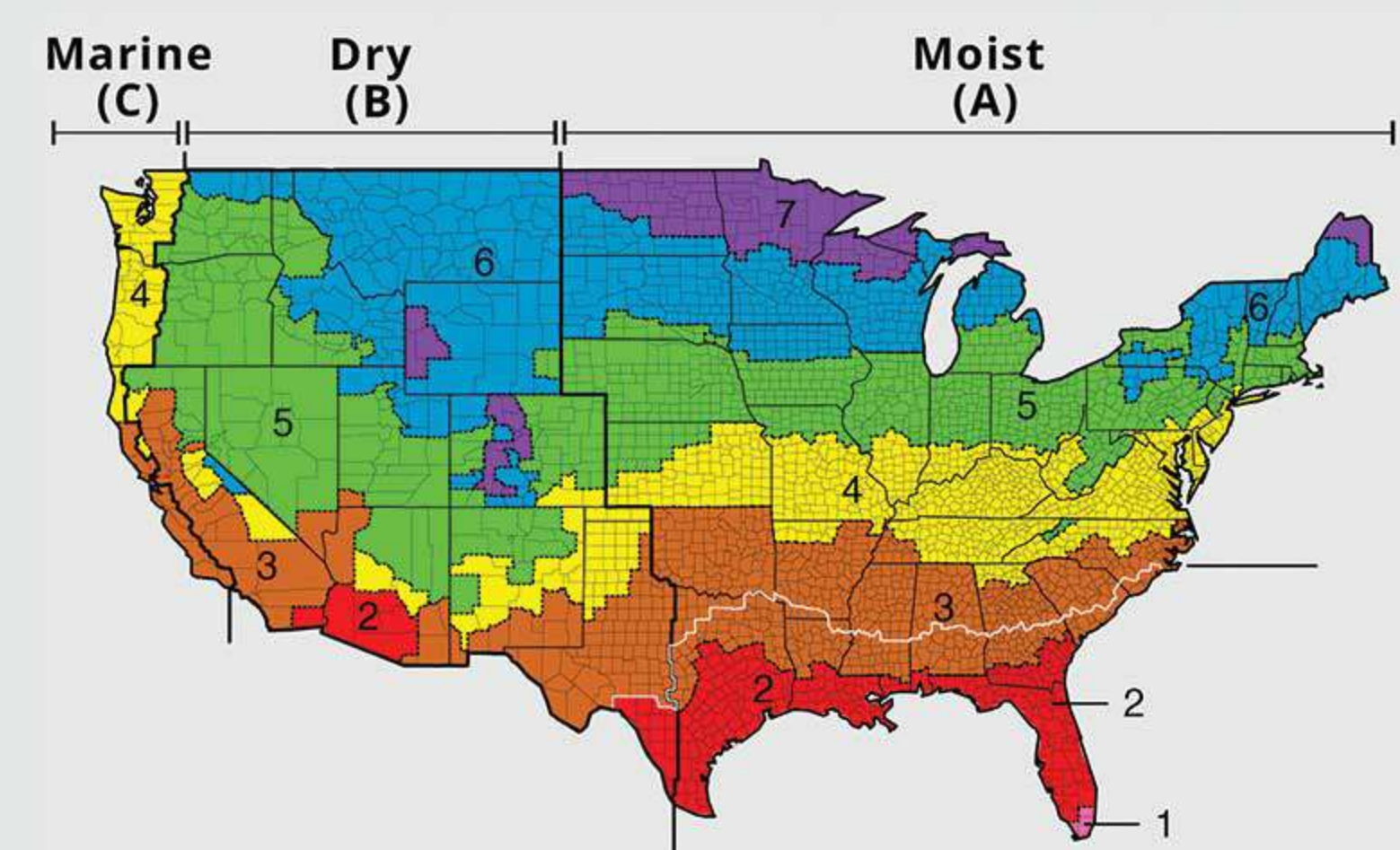
Why The Quality Stone Veneer Clip System?

The Clip System's 1/4" drainage plane is an open air space, meaning it is free and clear. This allows moisture to more easily travel down the water resistive barrier and out the bottom of the wall. There are fewer penetrations placed in the building envelope in a Clip System installation, and weight per square foot is greatly reduced versus a traditional mortar and wire application.

Options for Drainage in Traditional Mortar and Wire Lath Installations?

Quality Stone Veneer products can be direct applied with mortar and wire lath with inclusion of rainscreen and Wall Opening Weeps™ to create a 1/4" drainage plane.

ICC Climate Map



Lambris™ Product Line
For a look at all Clip System-applicable styles, visit the Lambris products section of our website.

CONTACT US

(800) 795-3229
info@qualitystoneveneer.com
www.qualitystoneveneer.com

CLIP SYSTEM™ ADVANTAGES & SOLUTIONS

BUILT-IN DRAINAGE

EASE OF INSTALLATION

PROFILE COMBINATIONS

LESS WEIGHT

REDUCTION ON MATERIALS

EASIER REMODELS

FEWER WEATHER LIMITATIONS

CONTROLLED PATTERN

VERSATILITY

