



ONE MANUFACTURER. ONE INSTALLER. ONE SOURCE OF ACCOUNTABILITY.

MATERIAL CLEARANCES

FIG. 1: UNDERLAYMENT AT WINDOW

Vinyl casing bead with factory-applied backer rod is to be used at all 4 sides of windows, doors and vertical transitions to dissimilar materials in stone areas. This practice provides a 3/8" gap allowing for expansion and contraction that can then be caulked.

FIG. 2: CLIP STARTER STRIP ABOVE WINDOW AND DOOR HEADS

Clip Starter Strip is to be installed immediately over the casing bead to maintain a 3/8" gap to the window, or door head.

FIG. 3: GAPPING UNDER WINDOW

Vinyl casing bead under windows sill, or stone, to the base of the window frame.

FIG. 4: EXPANSION JOINT LOCATIONS

Install galvanized expansion joints at changes in wall heights, adjacent to changes in materials, and alongside windows and doors where possible. Spacing not to exceed 15 foot on center in any direction.

VERTICAL EXPANSIONS:



HORIZONTAL EXPANSIONS:

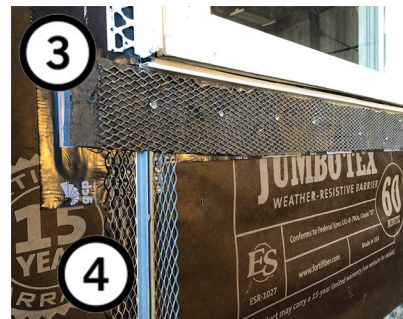
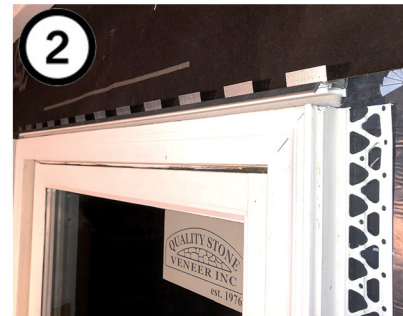
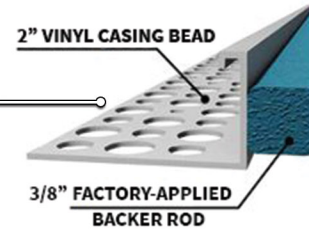
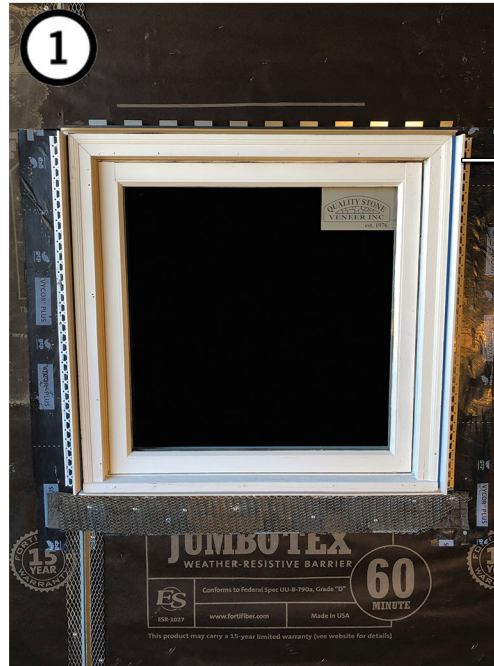
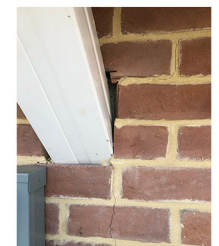
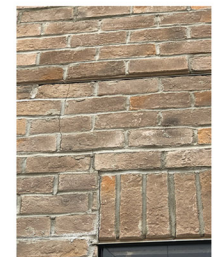
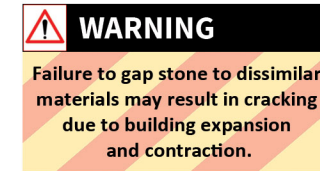


FIG. 5: GAPPING TO DISSIMILAR MATERIAL LOCATIONS

Always maintain a 3/8" gap in stone areas at:

- Windows, doors and framed openings
- Transitions to siding or dissimilar material
- Stone to stone inside corners
- MEP Penetrations and similar openings
- Expansion Joint locations
- All protrusions

FIG. 6: IMPROPER GAPPING TO DISSIMILAR MATERIALS



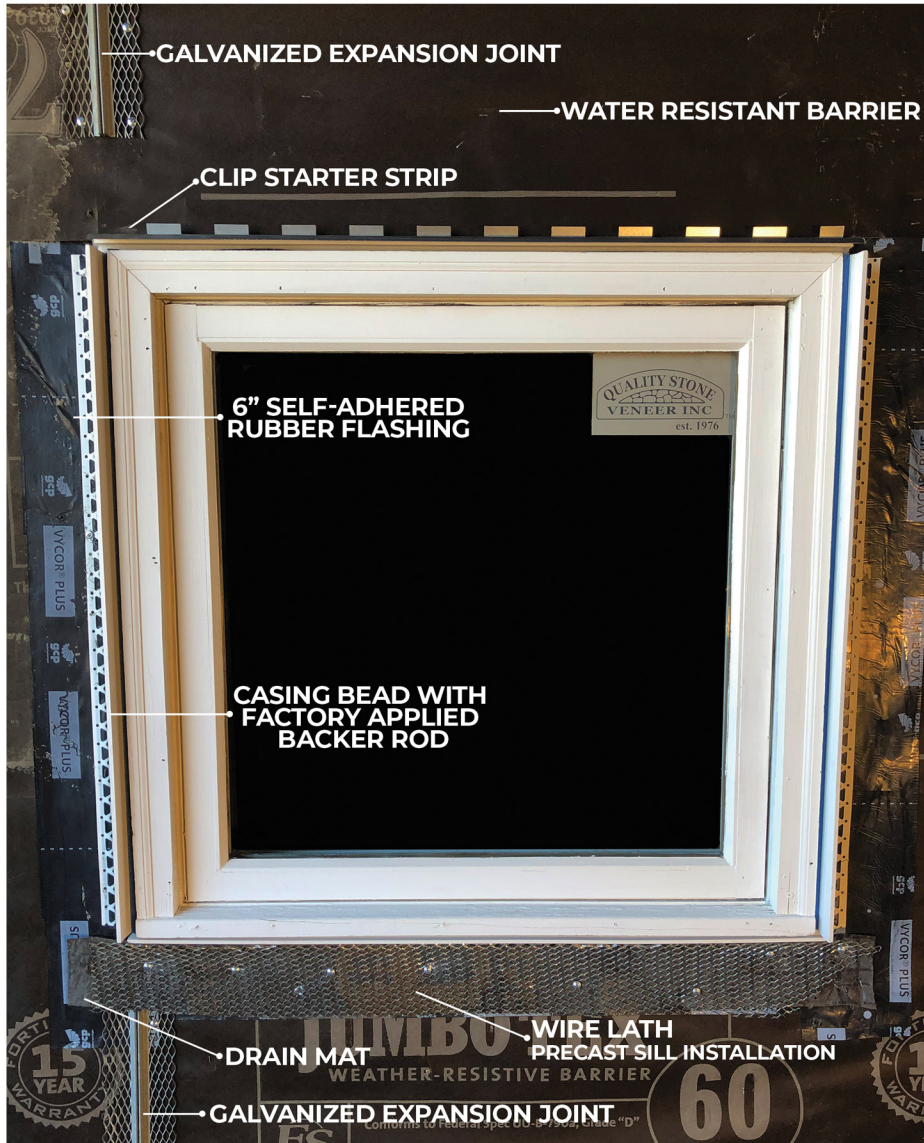
Subcontractor Signature _____

Quality Stone Veneer Field Representative _____

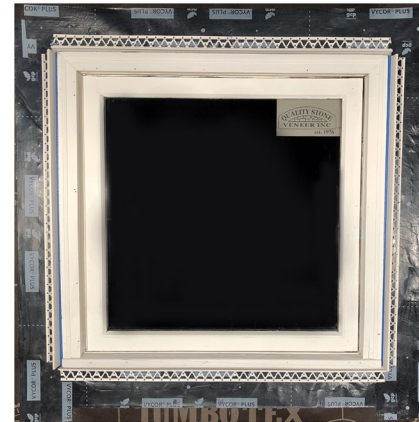


ONE MANUFACTURER. ONE INSTALLER. ONE SOURCE OF ACCOUNTABILITY.

CLIP SYSTEM INSTALLATION DETAILS



WINDOW PREPARATION AND UNDERLAYMENT PROCEDURE



①



- WATER RESISTANT BARRIER
- 6" SELF-ADHERED RUBBER FLASHING
- CASING BEAD WITH FACTORY APPLIED BACKER ROD



②



- CLIP STARTER STRIP AT WINDOW HEAD



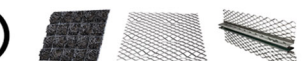
③



- CLIP STARTER STRIP AT WINDOW HEAD WITH WRB LAYER OVER FLANGE



④



- DRAIN MAT BEHIND LATH FOR DRAINAGE
- WIRE LATH FOR PRECAST SILL MORTARED INSTALLATION
- GALVANIZED EXPANSION JOINTS

Subcontractor Signature _____

Quality Stone Veneer Field Representative _____