

Eggshell Ohio Drystack



Traditional Stone Standard Color Selections Catalog

Handcrafted Stone Veneer, Precast, & Masterful Installation, Since 1976

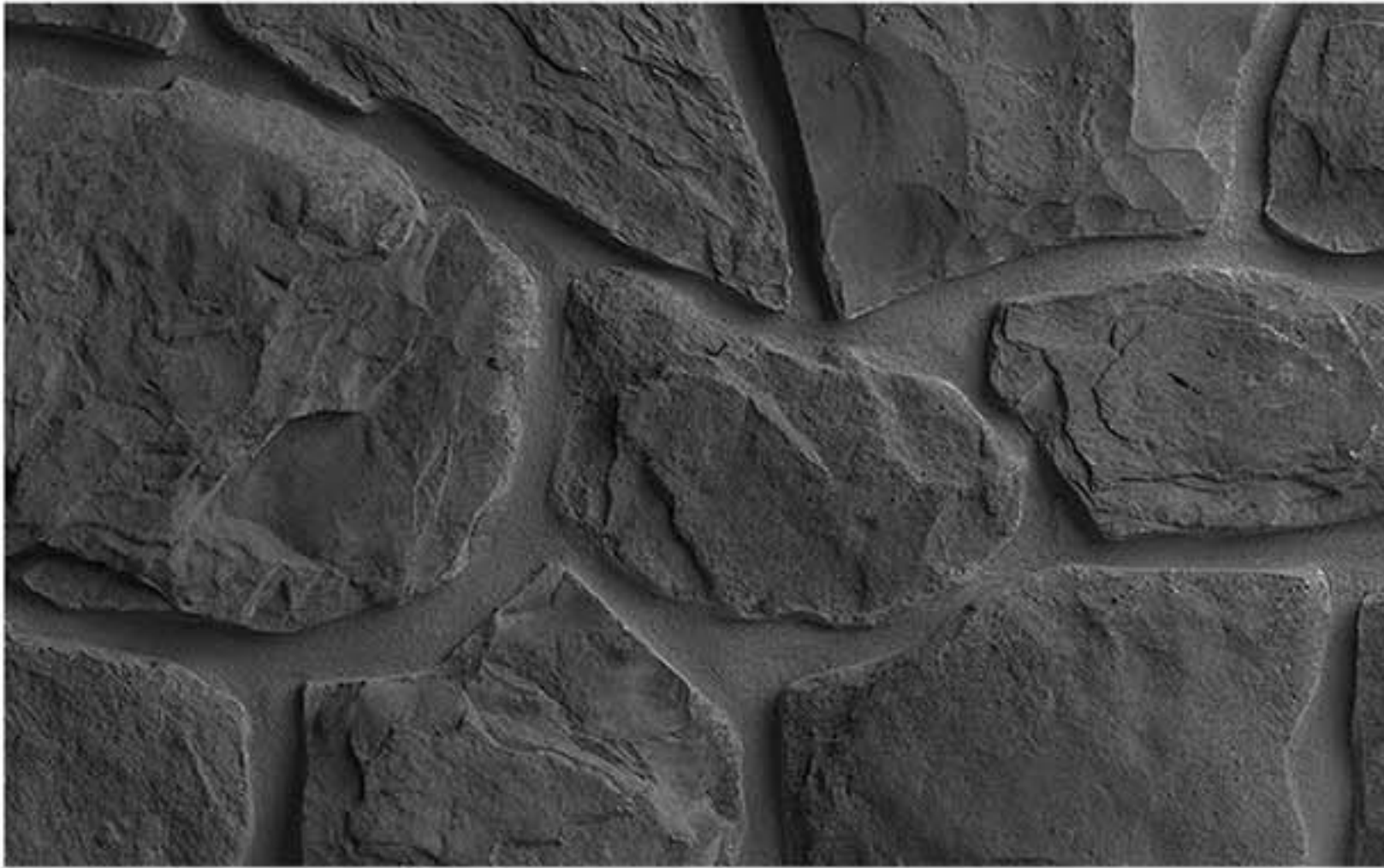




VIEW ON
WEBSITE



ORDER A
SAMPLE



Onyx Fieldstone



Onyx Drystack



Onyx Cobblestone



Onyx Ohio Drystack



Onyx LedgeStone



COLOR OF THE YEAR *Onyx*

A deep monochromatic charcoal tone, modern and timeless in shade.

◆ Charcoal mortar pictured. Charcoal mortar is recommended for the setting and jointing mortar of onyx selections.

Swatches above are intended to show a sample of color range only.

Stone colors, shapes and textures may vary online and in print form.

It is recommended to view a physical sample, and/or project before making final selection.



Caliza

STONE DIMENSIONS: HEIGHT: 6" | LENGTH: 18" | THICKNESS: 1.25"

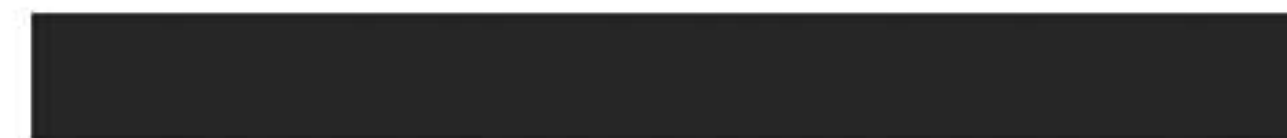
New!



Calacatta Caliza



Dusk Caliza



Swatches above are intended to show a sample of color range only. Stone colors, shapes and textures may vary online and in print form.

It is recommended to view a physical sample, and/or project before making final selection.



Ledgestone

STONE PANEL DIMENSIONS: HEIGHTS: 4", 8" | LENGTH: 17.5" | THICKNESS: 1.5" - 2.25"



Bull Run Ledgestone



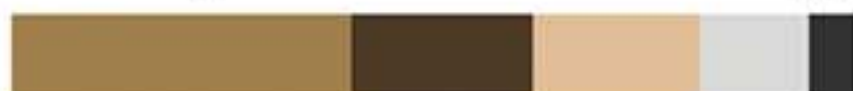
Granite Ledgestone



PA Lime Ledgestone



Susquehanna Ledgestone



Onyx Ledgestone



Calacatta Ledgestone



Swatches above are intended to show a sample of color range only. Stone colors, shapes and textures may vary online and in print form.

It is recommended to view a physical sample, and/or project before making final selection.



Ohio Drystack

STONE DIMENSIONS: HEIGHT: 1.5" - 6" | LENGTH: 3" - 22" | THICKNESS: 1.25" - 3"



Bull Run Ohio Drystack



Granite Ohio Drystack



PA Lime Ohio Drystack



Beaumont Ohio Drystack



Provence Ohio Drystack



Eggshell Ohio Drystack



Swatches above are intended to show a sample of color range only. Stone colors, shapes and textures may vary online and in print form.

It is recommended to view a physical sample, and/or project before making final selection.



Drystack

STONE DIMENSIONS: HEIGHT: 1.5" - 6" | LENGTH: 3" - 22" | THICKNESS: 2" - 3.5"



Bull Run Drystack



Granite Drystack



PA Lime Drystack



Beaumont Drystack



Provence Drystack



Eggshell Drystack



Swatches above are intended to show a sample of color range only. Stone colors, shapes and textures may vary online and in print form.

It is recommended to view a physical sample, and/or project before making final selection.



Cobblestone

STONE DIMENSIONS: HEIGHT: 4" - 12" | LENGTH: 4" - 18" | THICKNESS: 1.25" - 1.5"



Bull Run Cobblestone



Granite Cobblestone



PA Lime Cobblestone



Beaumont Cobblestone



Provence Cobblestone



Eggshell Cobblestone



◇ Off - White Mortar Pictured.

Swatches above are intended to show a sample of color range only. Stone colors, shapes and textures may vary online and in print form.

It is recommended to view a physical sample, and/or project before making final selection.



Fieldstone

STONE DIMENSIONS: HEIGHT: 3" - 14" | LENGTH: 3" - 18" | THICKNESS: 1.25" - 1.5"



Bull Run Fieldstone



Granite Fieldstone



PA Lime Fieldstone



Beaumont Fieldstone



Provence Fieldstone



Eggshell Fieldstone



Swatches above are intended to show a sample of color range only. Stone colors, shapes and textures may vary online and in print form.

It is recommended to view a physical sample, and/or project before making final selection.

Handcrafted Precast Accents

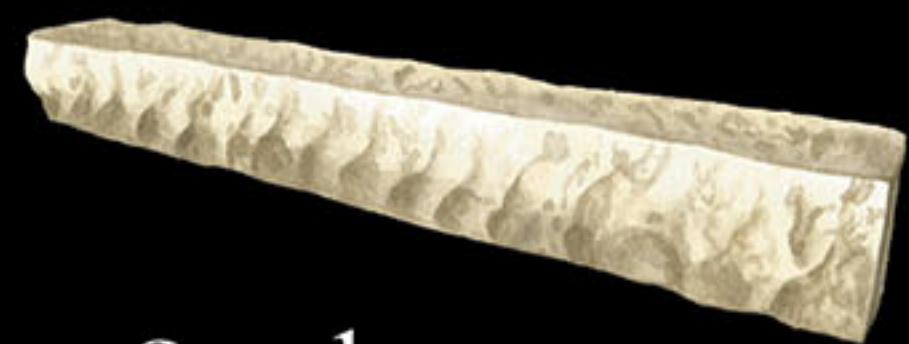
Sandstone Lambris Sill



Sienna



Steel



Sand

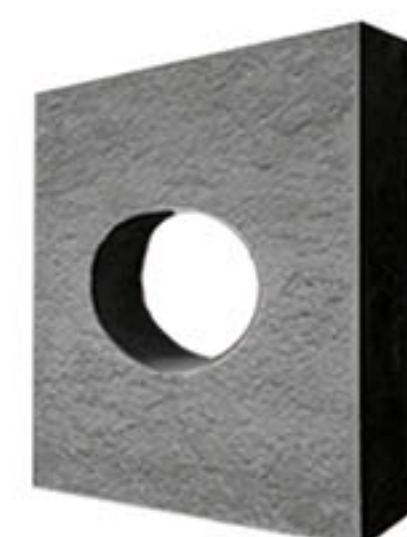
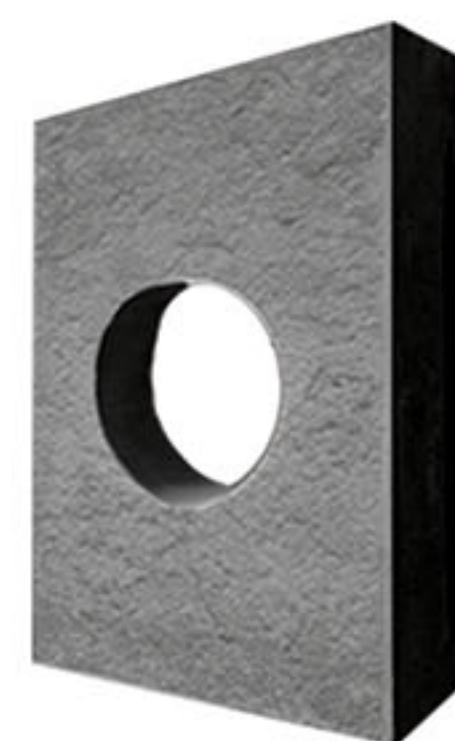


Eggshell

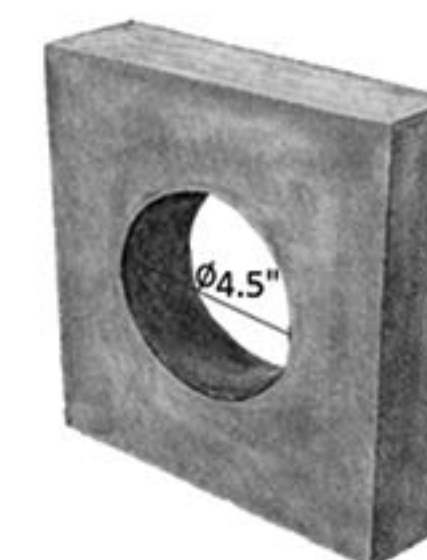
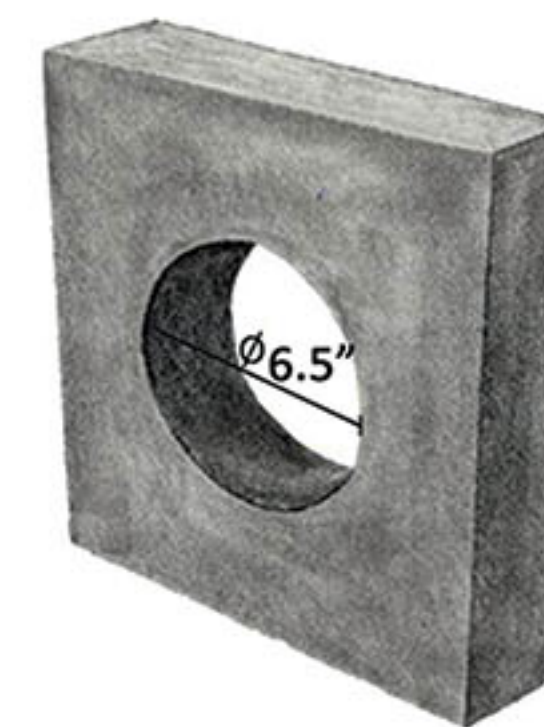
24"x3"x3" Sandstone Lambris Sill



Standard Accents



Siota Light Block Lambris
8"x12"x1.75"
8"x8"x1.75"



Dryer Vent Block
12"x12"x2" with 6.5" Hole
8"x8"x2" with 4.5" Hole



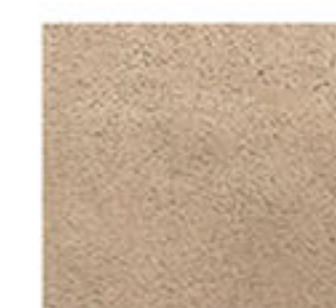
Siota Receptacle
Block Lambris
8"x8"x1.87"



Hewn Faucet Block
5.5"x5.25"x1.25"



Hewn Soldier
8"x4"x1.5"



Sienna



Steel



Sand



Eggshell

All Accents Available in *Sienna*.
Steel, Sand & Eggshell

The Quality is in the Detail.

Handcrafted Stone Veneer, Precast, & Masterful Installation, Since 1976



QUALITY STONE VENEER™
COLORLIBRARY

Ready to Request a Quote or see Samples?

Contact us today to get started —
or order samples and request a quote
directly from our website!

www.qualitystoneveneer.com



Have a product or installation question?

1-800-795-3229

info@qualitystoneveneer.com

Find more project inspiration on our website.

Family owned and operated since 1976 with half a century of setting the standard in stone veneer siding.



Mortar Jointing Color Options

Gray
(Standard)



Buff
(Custom)



Off-White
(Custom)



Charcoal
(Custom)



© Quality Stone Veneer, Inc. Refton, PA 17568 U.S.A.

AIA
Continuing
Education
Provider

